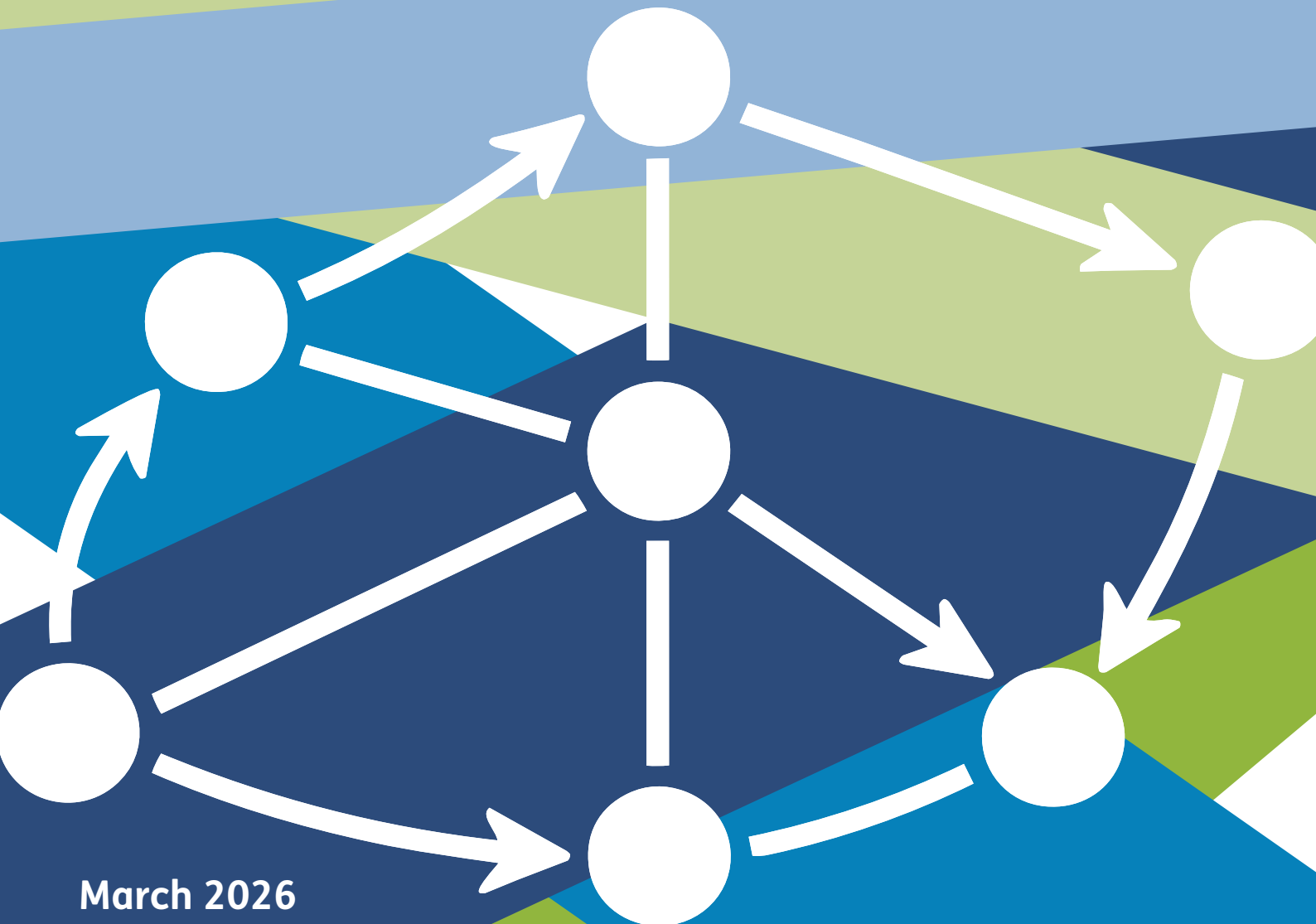


Easy Read



Tyfu
Canolbarth Cymru
Growing
Mid Wales

Our plan for transport in Mid Wales



March 2026

How to use this document



This is an Easy Read version of: **Mid Wales Regional Transport Plan.**



You might need help to read it. Ask someone you know to help you.



Where the document says **we**, this means **Growing Mid Wales**. For more information contact:

Website: www.growingmid.wales



Hawdd ei Ddeall Cymru
Easy Read Wales

[Easy Read Wales](#) made this document into Easy Read using **Photosymbols**. [To tell us what you think about this easy read version, click here.](#)

Contents

- What this plan is about4**
- What we want to see6**
- About Mid Wales.....8**
- Why we need this plan9**
- What we want for Mid Wales 12**
- Our goals 13**
- What we will do 15**
- How you can get involved..... 17**
- Checking progress 18**
- Where to find out more 19**

What this plan is about



We are Growing Mid Wales. This plan is about how we will make transport better in Mid Wales.

Transport means ways for people to travel, like:



- Buses



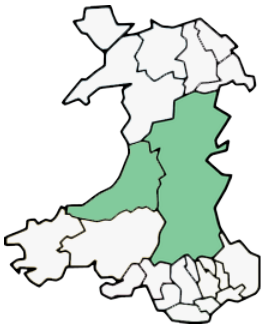
- Trains



- Walking



- Cycling.



This plan covers Powys and Ceredigion. Together, these areas form the Mid Wales Corporate Joint Committee.



The aim is to help people travel easily, safely, and in ways that are good for nature and the planet.

Who is involved in the plan



These groups are working together:

- Powys County Council
- Ceredigion County Council
- Welsh Government
- Transport for Wales
- Other groups and local communities.

What we want to see

We want transport in Mid Wales that:



- Is easy for everyone to use.



- Is good for the planet.



- Works well.



- Links people and places.



- Supports jobs, communities, and culture. Culture means the things people do in their community, like festivals, art and music.

About Mid Wales



Mid Wales is mostly countryside, with towns, villages, farms, and the coast.



Around 205 thousand people live here.



More older people live here than before.



It is important to help everyone get to the places they need.

Why we need this plan

Some people find it hard to travel in Mid Wales:



- It can be hard to get to work, school, or health services, like the doctor or hospital. This is harder in the countryside and small villages.



- Roads can be busy or hard to use.



- Some places do not have buses or trains, or they are not very often.



- Not everyone has enough money to travel easily.



We want to fix these problems and make travel fair for everyone.

Transport now



There are buses, trains, roads, and cycle paths in Mid Wales.



Many people use cars because buses and trains do not reach all places in Mid Wales.

We want more people to:



- Use buses and trains



- Walk



- Cycle



- Wheel – like using a wheelchair or mobility scooter.

What we want for Mid Wales

We want to:



Make it easier for everyone to get to work, school, health services, and places for fun.



Make transport safer and cleaner.



Help people who might find it hard to travel. Like older people, disabled people, or anyone who needs extra support.



Support jobs, businesses, and people who visit for holidays or days out.

Our goals

We want:



Everyone to be able to get to work, school, doctors, and other places they need.



Travel by bus, train, walking, cycling, or wheeling to be easy.



Travel around Mid Wales to be easy.



More people to use other ways to travel, not just cars.



More safe paths for walking, cycling, and wheeling.



Less harmful gases from transport.



Roads and transport to be safe and work well, even in bad weather.



It to be easy to change from one type of transport to another, like from bus to train.

What we will do

We will:



Make main roads and railways better.



Provide more buses and coaches to help people get around.



Build new paths and cycleways, and places to park bikes.



Give more travel information. Like telling you when the next bus is coming at bus stops.



Make roads safer and stop accidents.



Provide more electric car charging points and greener buses.



Help people with shared cars and special transport.



Tell people about ways of travelling that are better for nature and the planet.

How you can get involved

We want everyone to have a say. You can:



- Take part in public consultations. These are surveys or meetings where people can give their ideas.



- Share your ideas online or at community events.



- Talk to your local council about the transport problems you have.



Everyone's ideas are welcome. Your feedback will help make transport better in Mid Wales.

Checking progress

**We will check if the plan is working every year.
We will:**



- Look at what we have done from our plan.



- Share a report every year to show what we have done.



- Make changes if needed.



A full review will happen after 3 years to make sure the plan is working.

Where to find out more

You can find more information by:



- Visiting your local council website.



- Looking for updates on Welsh Government and Transport for Wales websites.



- Asking for printed copies of the transport plan documents at council offices or libraries.